

# Cloning Quiz

Name: \_\_\_\_\_

Date: \_\_\_\_\_

Class: \_\_\_\_\_

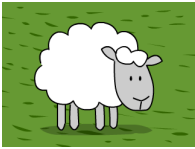
**1. Clones have the exact same:**

- a. Personalities
- b. Physical appearances
- c. Intelligence levels
- d. Genetic material

**2. What can you conclude from the fact that humans have cloned plants for thousands of years?**

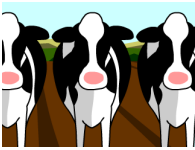
- a. Much of today's modern technology was developed in ancient times
- b. Cloned plants are immune to all diseases and pests
- c. Cloning plants is significantly easier than cloning animals
- d. Most of the crops that exist today are clones

**3. What was the significance of Dolly the Sheep?**



- a. She was the first organism ever cloned
- b. She was the first animal cloned as an embryo
- c. She was the first adult animal to be cloned
- d. She was the first animal to be cloned multiple times

**4. Why would scientists want to clone cows?**



- a. Cows don't reproduce quickly enough to meet the demand for meat and dairy products
- b. To create livestock that are almost guaranteed to be strong and healthy
- c. Raising calves is expensive and time-consuming; cloning cows would produce adult animals ready for slaughter
- d. Cows are much easier to clone than animals like chickens and goats

**5. How might cloning eventually help humans live longer?**

- a. Cloned human organs could be used to replace unhealthy ones
- b. Clones tend to live longer than the organisms they take their DNA from
- c. By being cloned multiple times, a person could essentially live forever
- d. The food obtained from cloned animals and plants would be healthier and more life-sustaining than ordinary food

**6. Tim says that genetic diversity helps species survive. What is genetic diversity?**

- a. When many different species live together in one particular environment
- b. When an organism's DNA changes throughout its lifespan
- c. When a population of organisms contains a wide range of genetic traits
- d. When organisms are able to trade pieces of DNA with one another

**7. Which of the following is an example of an ethical question?**

- a. How can DNA be removed from adult animal cells?
- b. Can a human clone ever lead a fulfilling life?
- c. What will happen to crop yields if cloned plants develop a virus?
- d. Is human cloning scientifically possible?

**8. In what decade was Dolly the cloned sheep born?**

- a. The 1970s
- b. The 1980s
- c. The 1990s
- d. The 2000s

**9. Which of the following problems might a human clone suffer from? Choose the best answer.**

- a. Premature aging
- b. Insanity
- c. Susceptibility to rare diseases
- d. Spontaneous organ failure

**10. Place the following events in sequence: A)An adult animal is cloned; B)Scientists split embryos in the womb; C)Plants are cloned**

- a. C, B, A
- b. B, A, C
- c. A, B, C
- d. B, C, A